
DSP-D300 QUICK-START GUIDE

Installation

1 Unpack the box and check the contents.

DSP-D300



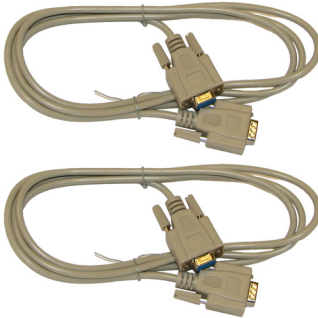
Windows Software CD



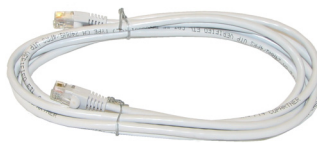
USB Cable



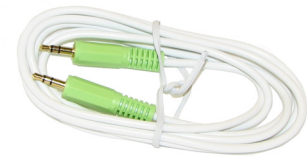
DB-9 Serial Cables



Ethernet Cable



Audio Monitor Cable



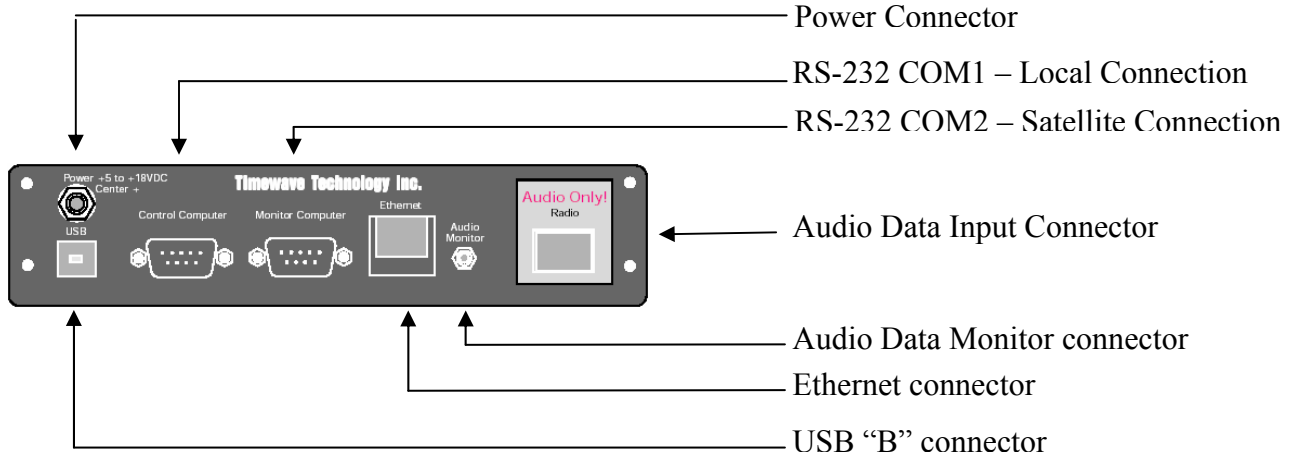
Power Adapter



Audio Data Cable



Note: DO NOT CONNECT THE POWER AT THIS TIME!



1A. For systems with serial connections:

Connect the RS-232 cables between the DSP-D300 and the destination Hardware.

1B. For systems with Ethernet connections:

Connect the Ethernet cable between the DSP-D300 and the hub. Make sure that you do NOT connect the Ethernet cable to the Radio Audio Jack!

Also note that the default IP address of the unit is 192.168.1.250. Please check with the network administrator to confirm that there is not an IP conflict. If there is, wait until section 8, set the IP address to a new address, then plug in the cable and reboot.

2. Connect the open end of the Audio Cable to the Receiver (usually there is an audio bus of some sort).
3. Plug the Audio Cable into the Audio Jack. Do not confuse the Audio Jack with the Ethernet connector.
4. Connect the USB cable to the DSP-D300. Do NOT connect the cable to the PC or USB hub.

3 Install the Software

Insert the DSP-D300 CD into your PC. The setup screen will appear. Follow the on-screen instructions.



4 Powering Up

Insert the power cord into the DSP-D300. All the LEDs will light for 2 seconds.



The power LED will remain lit.

5 USB Connection

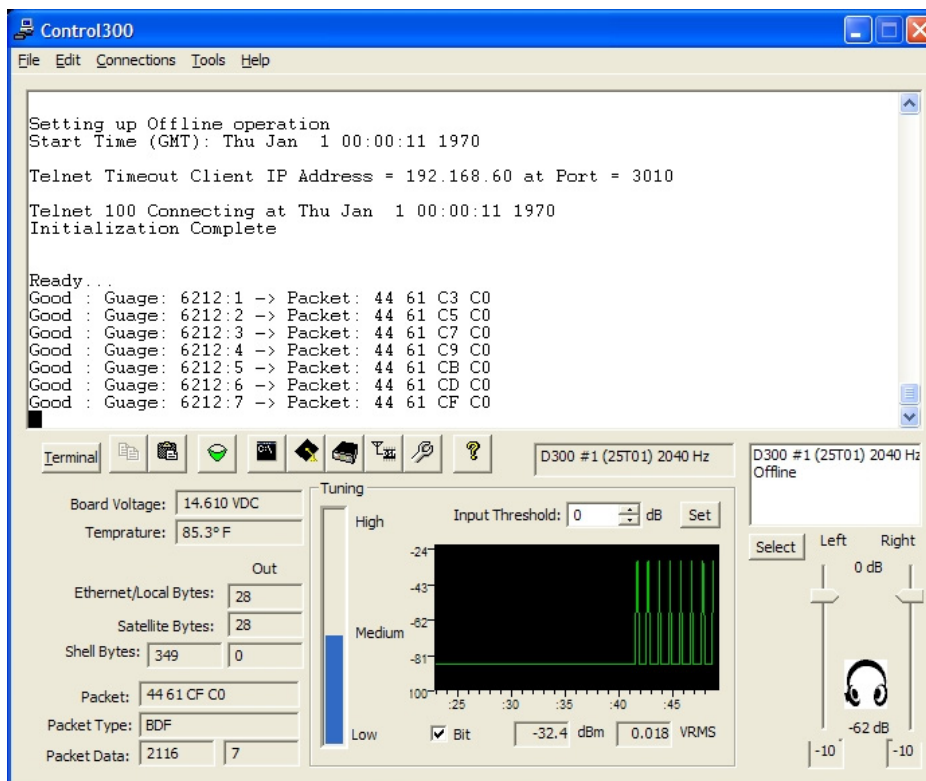
Insert the USB cable into the PC or USB hub. The Found New Hardware Wizard will start. Choose *Install from a list or specific location*.



When prompted for a location, type “C:\Program Files\Timewave\DSP-D300”.

6 Connecting

Start Control300 from the Start menu on the PC.

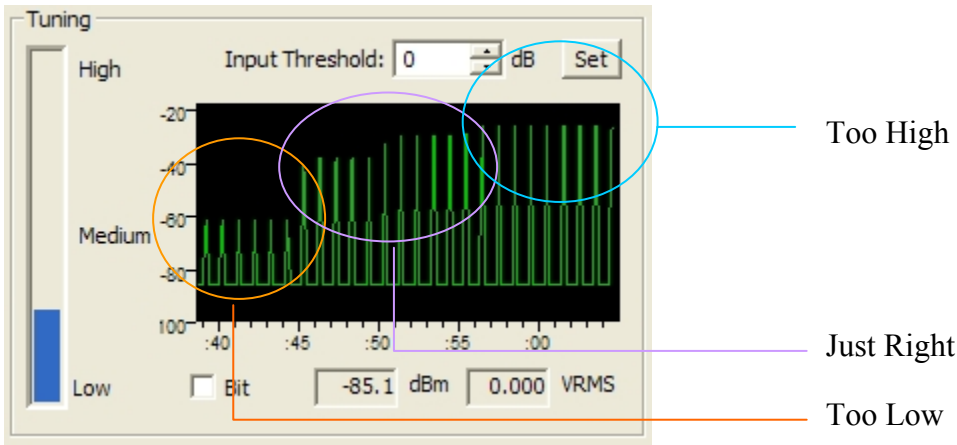


1. Double click on the D300 listed on the right. In this example, **D300 #1 (25T01)**.

- The Audio tuning will immediately be available. The Ethernet module takes a minute or two to boot. When the Ready... prompt appears, the system is booted.

7 Tuning

Observe the histogram. Using the volume on the Radio if possible (Input Threshold if not), adjust the incoming IFLOWS packets to be around -32 dBm.



To use Input Threshold, set the desired change in gain; then click on Set. When packets are being properly decoded, they will be seen on the main display.

8 Ethernet

From the Tools menu, choose *Ethernet Settings*. **Do NOT** do this before the “Start...” appears on the text display after the Ethernet boot.

The Ethernet Settings dialog box is shown. It has two main sections: Main Ethernet Settings and Idle Alarm. The Main Ethernet Settings section includes fields for IP Address (192.168.3.238), IP Mask (255.255.255.0), Gateway (192.168.3.2), DNS 1 (209.253.113.18), and DNS 2 (209.253.113.10). The Idle Alarm section includes fields for IP Address (192.168.3.60), Port (3010), and Timeout (0). The Telnet Clients section is a table with columns for IP Address, Port, and Retry. The table contains three entries: 192.168.3.60 on port 3001 with a 30-second retry, 192.168.3.60 on port 3002 with a 30-second retry, and 192.168.3.60 on port 3003 with a 30-second retry. Buttons for OK, Cancel, Edit, Add, and Remove are visible.

IP Address	Port	Retry
192.168.3.60	3001	30
192.168.3.60	3002	30
192.168.3.60	3003	30

Fill in all the Ethernet settings for the box. There is no DHCP. The DSP-D300 requires a static IP address. Please see the network administrator for these settings. For now leave the Idle Alarm Off with Timeout set to “0”.



Add all the Telnet Clients for this box. These are the IP addresses of the clients to receive the IFLOWS data.

8 Confirm Ethernet

From the Tools menu, choose *Shell*. Do not do this before the “Start...” appears on the display.

The shell will start.

```
Initializing Shell
OpenSSH Version OpenSSH_3.7p1, see http://www.openssh.org
Shell Version 1.0, Copyright (c) 2004-2006, Timewave Technology Inc.
Build Jan 13 2006 12:51:17
```

```
$ |
```

Status messages will occasionally appear on the display. These may be ignored.

Type “set”.

```
$ set
  IPAddress=192.168.3.238
    IPMask=255.255.255.0
      Gateway=192.168.3.2
        MACAddress=00:40:9D:23:F3:37
          DNSServer1=209.253.113.18
            DNSServer2=209.253.113.10
              PacketMode=BDF
                PacketTimeout=Disabled
                  PacketTimeoutPort=3010
                    PacketTimeoutAddr=192.168.3.60
                      TelnetServer0 =192.168.3.60 (192.168.3.60)
                        TelnetPort0 =3001
                          TelnetRetry0 =30 seconds
                            TelnetMode0 =Telnet
                              NISThost=Enabled
                                132.163.4.102 time-b.timefreq.bldrdoc.gov - NIST, Boulder,
                                Colorado
```

```
$ |
```

The listing should match what was entered before.

Type “quit”.



```
$ quit  
Closing the Shell.
```

9 Finish

At this point, the DSP-D300 will be operating. Please read the manual for further information.