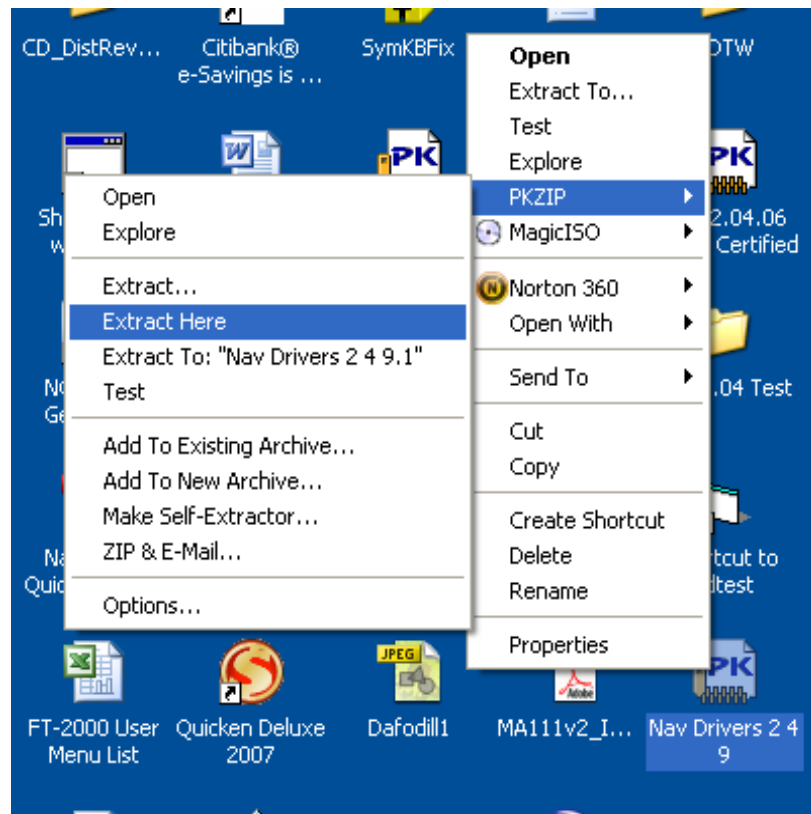


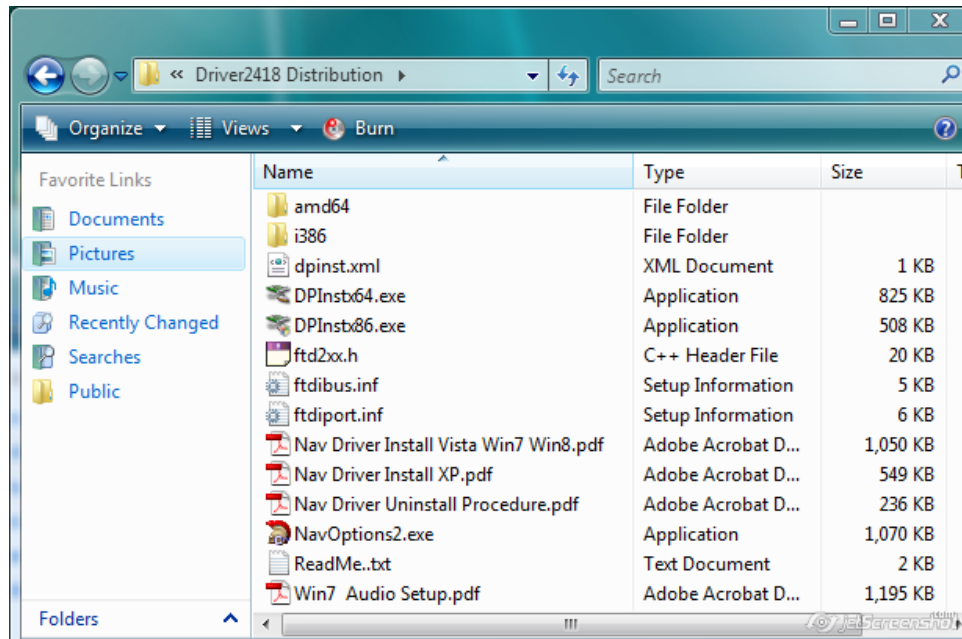
# Driver Upgrade Instructions for Navigators installed on Windows XP

This procedure is used when you already have Navigator drivers on your computer, and want to upgrade to the latest version 2.4.18 (or later) . If you have an XP machine, use these instructions. If you have a Vista, Win7 or Win8 machine, use the instructions “Nav Driver Install Vista Win7 Win8” instead.

Next, unzip the file "Nav Drivers 2 4 18.zip" (or later) to the desktop. After you have extracted the file it will have the contents shown below:



"Extract Here" will place the unzipped folder on the desktop.



Select the .pdf file for your operating system for instructions on upgrading your driver. If this is a first time installation, then follow the instructions on the Navigator Install CD that came with your Navigator.

This version of the driver is 2.4.18 (or later) This driver is used for both 32 bit and 64 bit installation. The driver determines which type of computer is used and loads the appropriate driver elements.

**Do not be put off by the size of this document. Most of the space is taken up with screen shots showing the step by step procedures. Actual installation of the drivers takes about 5 minutes.**

**BEFORE YOU PROCEED, IF YOUR NAVIGATOR IS PLUGGED INTO THE USB OF YOUR VISTA COMPUTER, UNPLUG IT. YOU WILL RECONNECT THE NAVIGATOR LATER ON IN THIS PROCEDURE.**

## UNINSTALLING THE PREVIOUS VERSION OF THE DRIVER

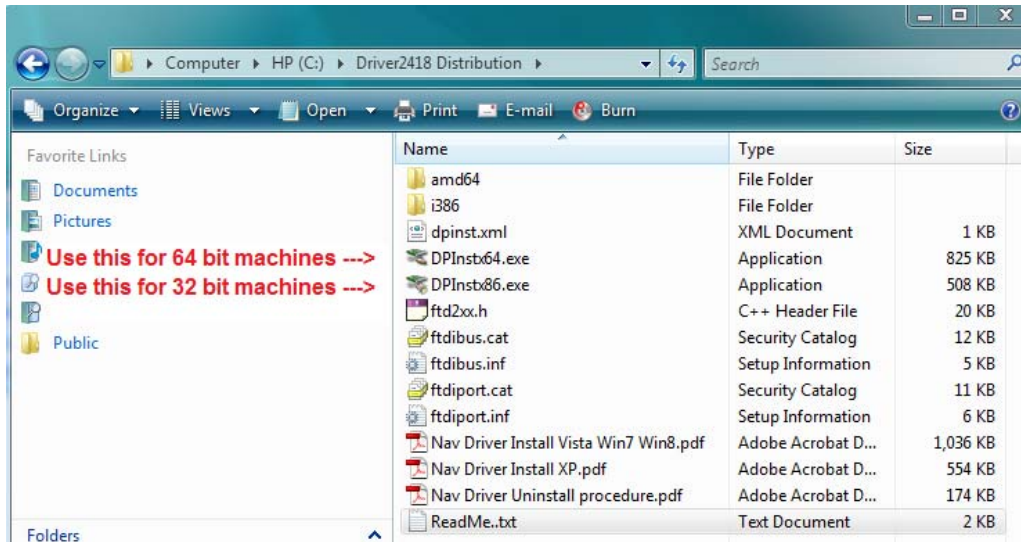
You need to remove the previous version of the driver before you continue with the installation. ***NOTE: If this is a first time installation for the Navigator on this computer, there is no driver to remove, so you may proceed to the **INSTALL THE DRIVER** section now.***

See the document "Nav Driver Uninstall Procedure.pdf" in the Driver2418 folder and follow the instructions for removing the existing driver.

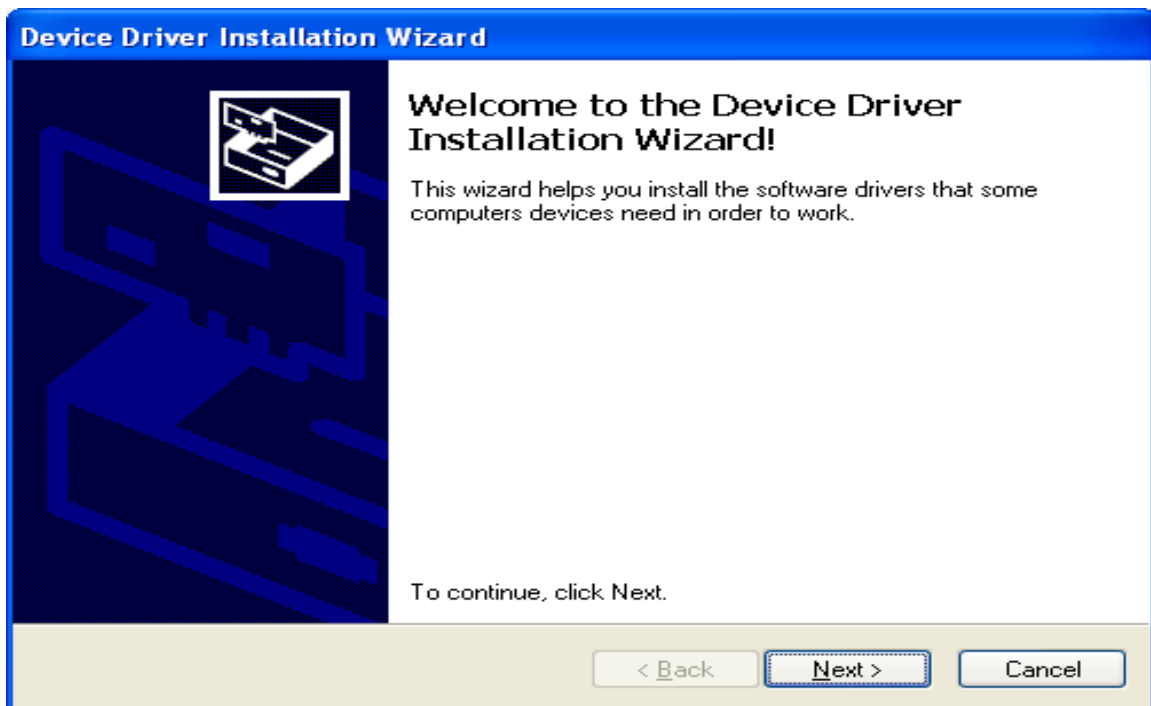
An alternate method, originally recommended by FTDI for driver removal uses the FTDI Clean Utility. The newer method using the Nav Driver Uninstall Procedure.pdf is now recommended by FTDI for XP machines. The FT Clean Utility is no longer supported by FTDI.

## INSTALL THE DRIVER

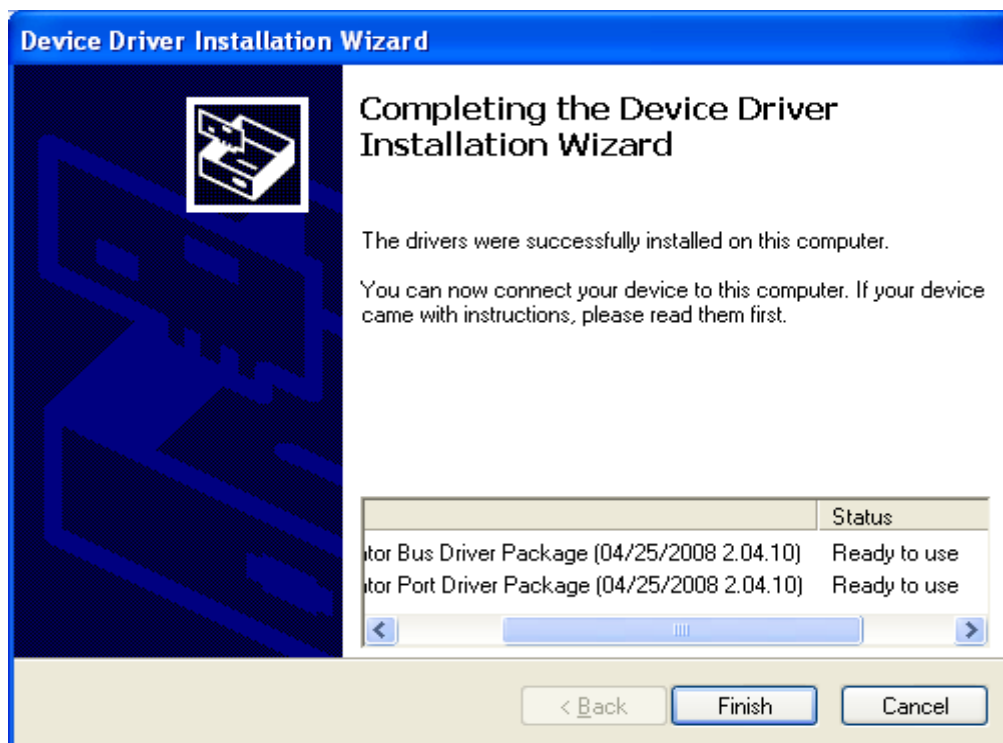
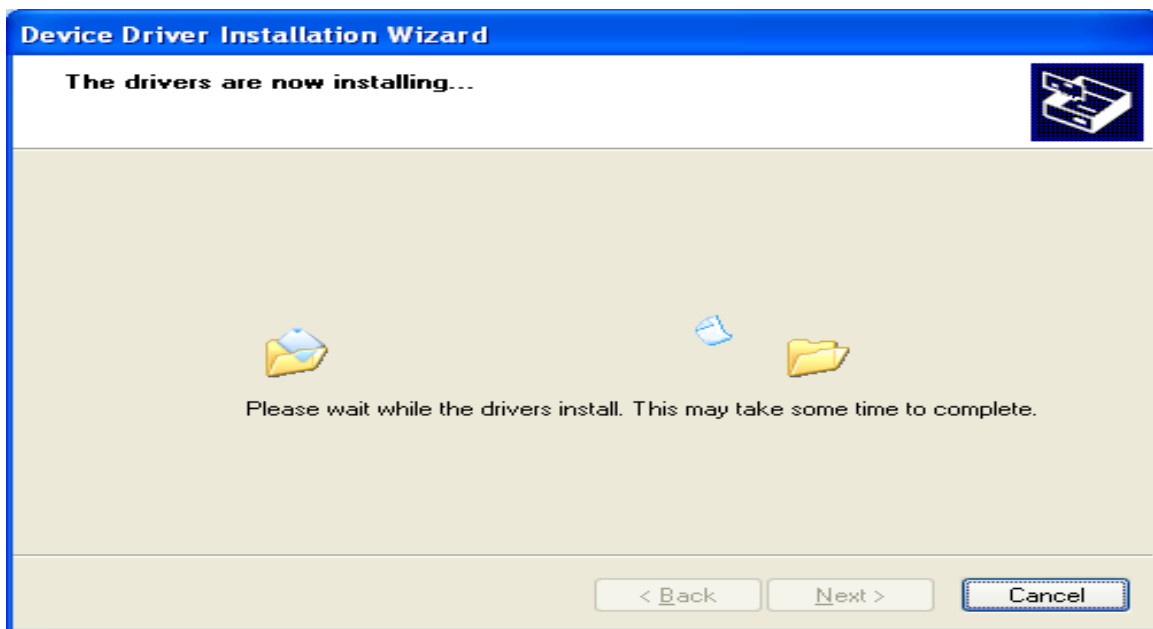
Now go to the folder where you unzipped the NavDriver File



If you have a **32 bit computer**, Click on the Application **DPInstx86**  
If you have a **64 bit computer**, Click on the Application **DPInstx64**  
... this will install new drivers in C:\Windows\System32\DRVSTORE on your computer. You will see the following dialog.



Click Next>



Click **Finish**

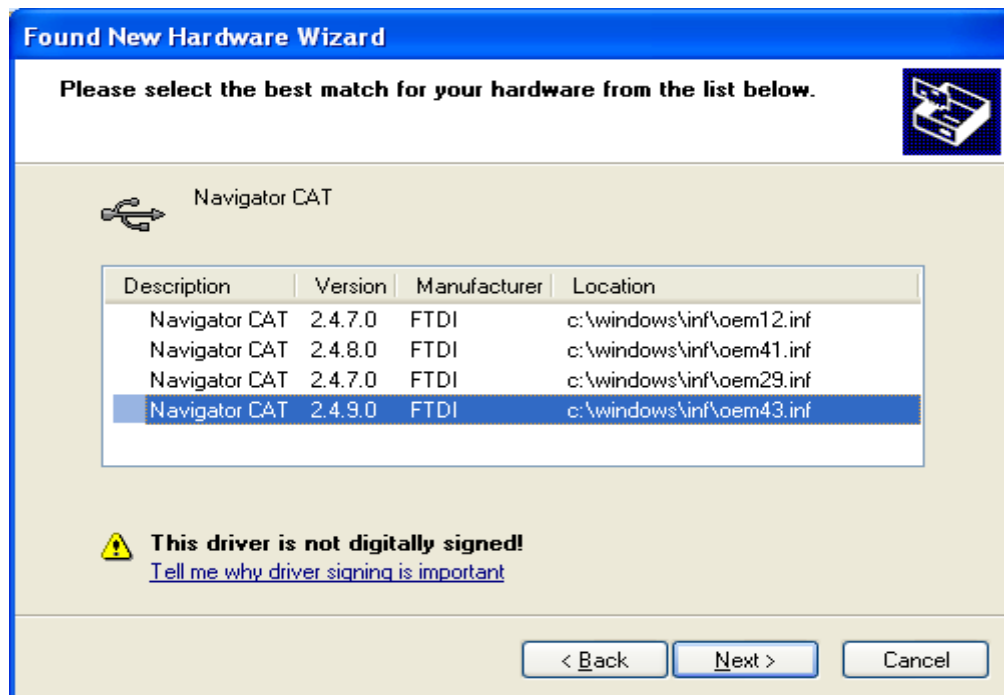
Note that you have installed two Driver Packages: Bus, and Port, and the version is 2.04.18 or later. The driver is now installed in DRVSTORE.

NOW: Plug the Navigator into the USB. You will get the following screen:



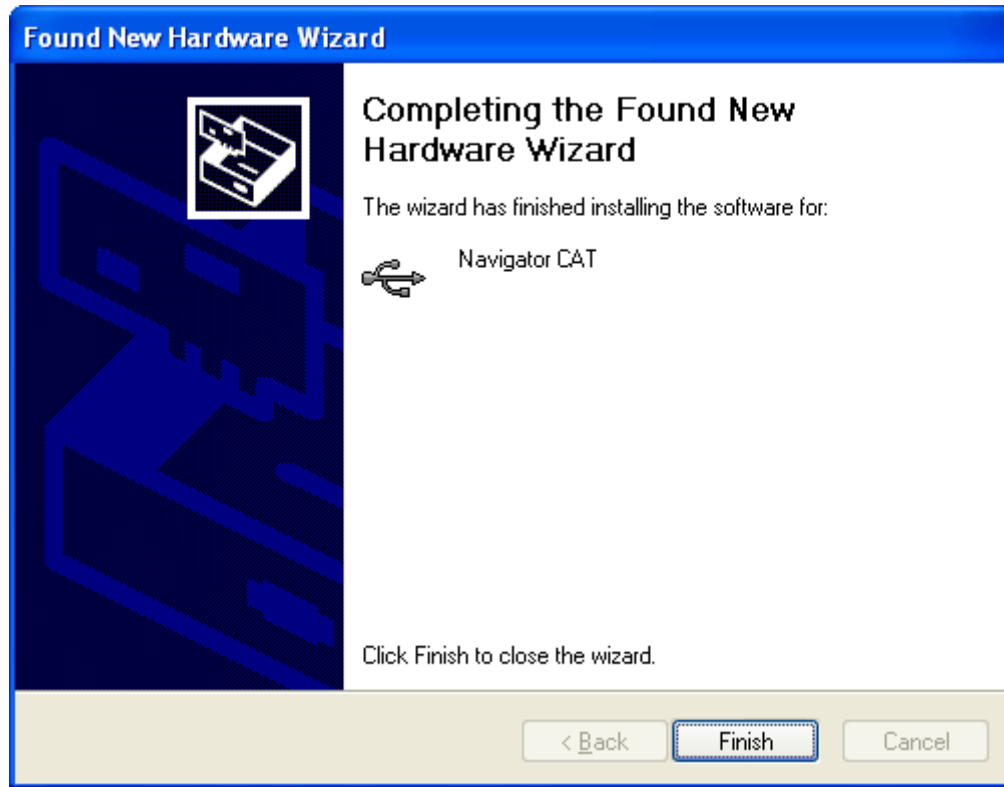
Click Next>

If you have installed a Navigator before, you *may* get the following screen



Select the one with the latest version number - it will be Version 2.4.18 (or later) and click **Next>**

There will be screens showing the progress of the installation of the first device, then you will see this screen:



Click Finish

You will now see 11 more screen sets for the remaining devices that are to be installed.

Repeat the above      Next ... Finish      sequences for the devices listed below.

Navigator PTT CW Squelch  
Navigator WinKey  
Navigator FSK  
Navigator RS232 Port  
Navigator Configuration  
Navigator CAT & PTT CW Squelch  
Navigator CAT & PTT CW Squelch  
Navigator WinKey & FSK  
Navigator WinKey & FSK  
Navigator RS232 & Config  
Navigator RS232 & Config

After the last one, you will see a message in the balloon in the lower right hand corner of the screen: "Your new hardware is installed and ready to use."

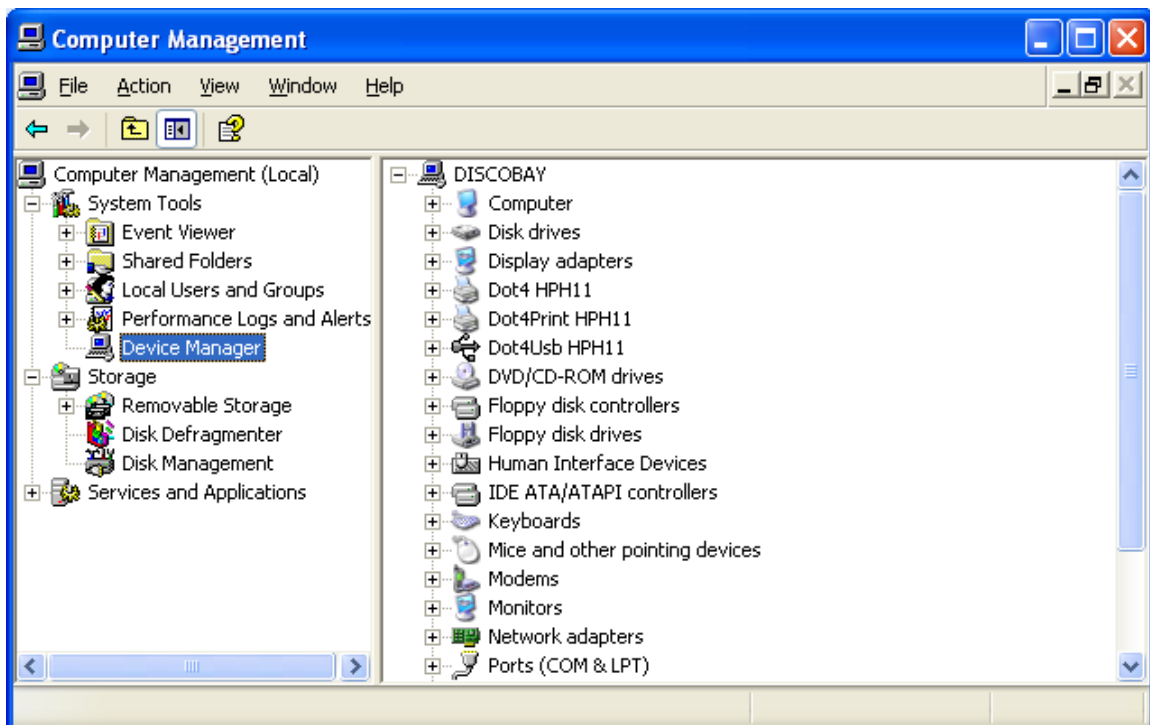
The Navigator is now installed.

# CHANGING PORT ASSIGNMENTS

Windows assigns port numbers to the COM devices during the installation process. If for some reason you need to change these assignments, follow the procedure below.

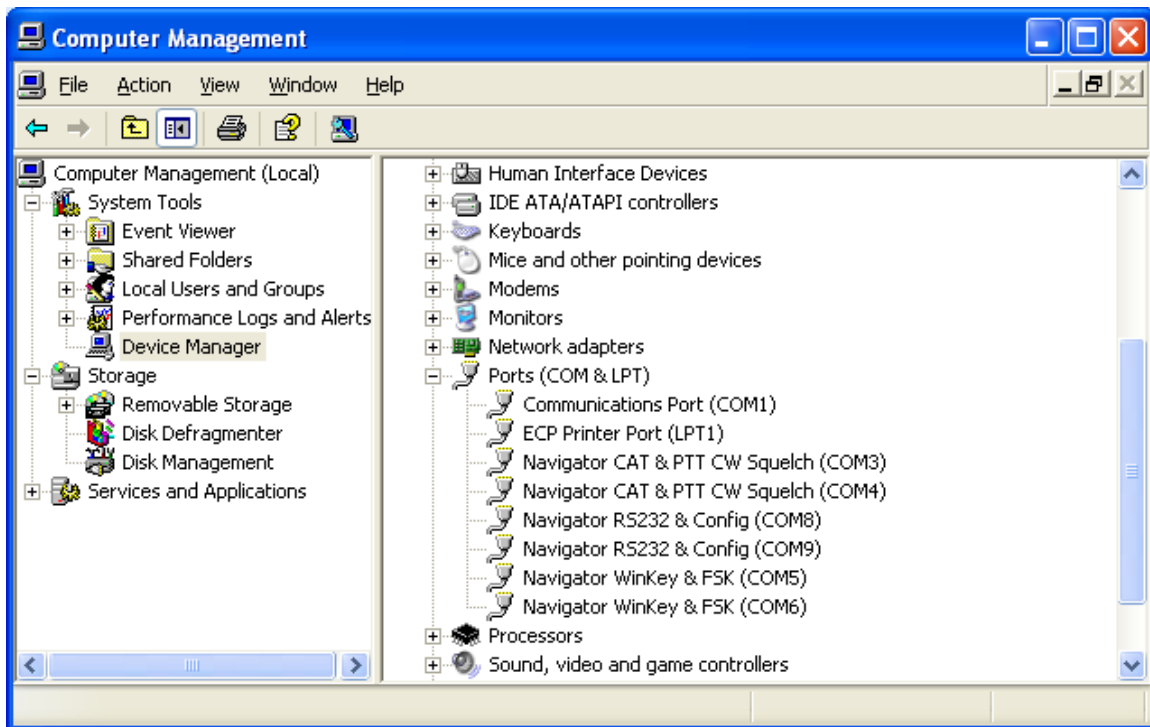
First, bring up the Computer Management screen. This is done by right clicking on “My Computer” on the Windows “Start” screen. Select “Manage” from the pop up screen after you right click.

Click on “**Device Manager**” and then click on “**Ports (COM & LPT)**”



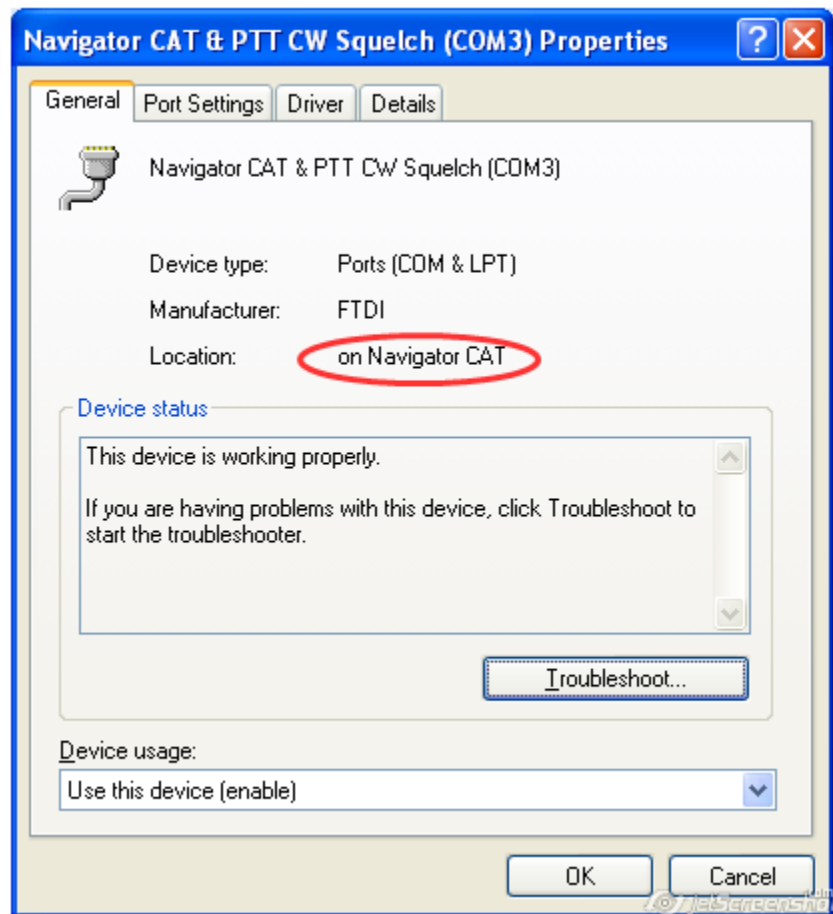


You will now see the port assignments for Navigator. The devices on Navigator are actually dual port devices, so you will see the general name “e.g. Navigator CAT & PTT ...” with two COM assignments following them.

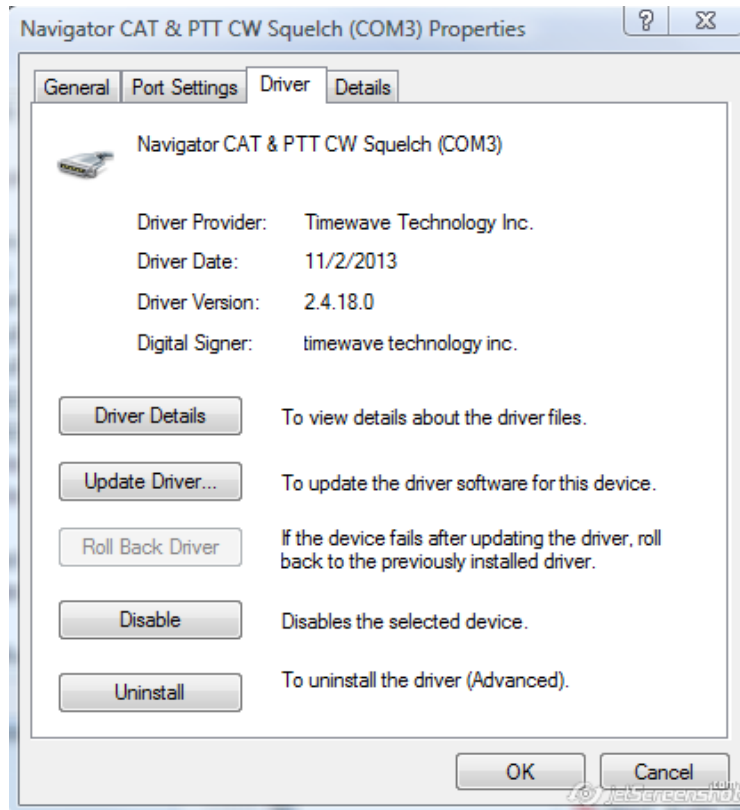


If you double click on one of these, for example, COM3, you will see the properties of the port as shown below.

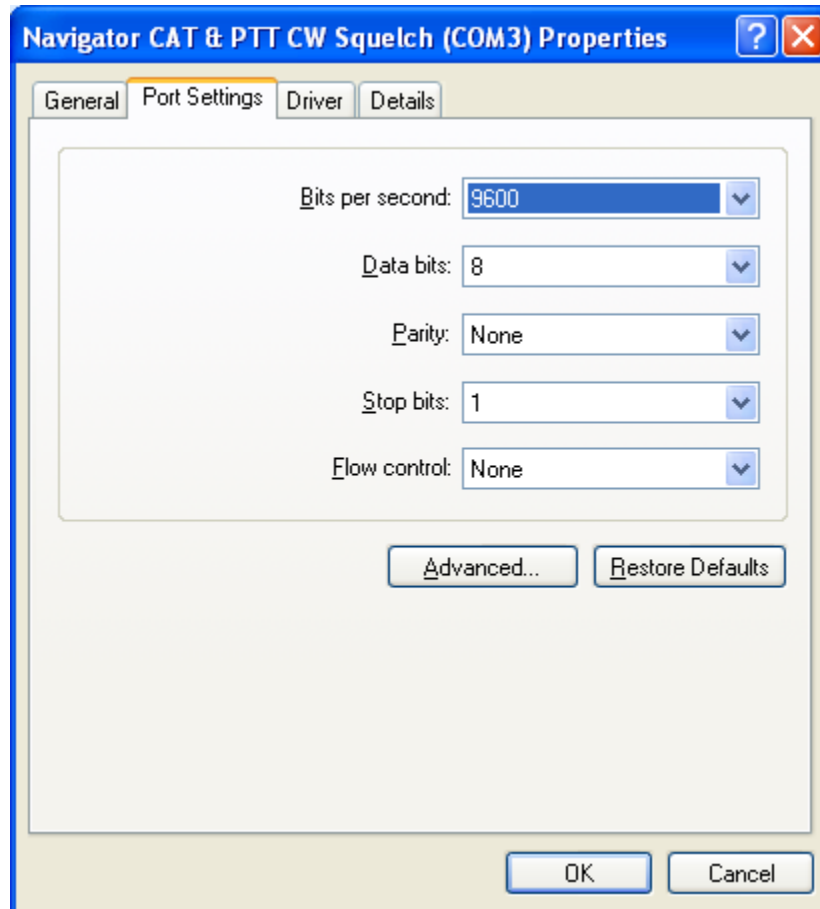
There is an entry that shows the “Location”. In this example, COM3 is assigned to Navigator CAT control port, which is one of the two ports on the “Navigator CAT & PTT ..” device. (PTT control is on COM4)



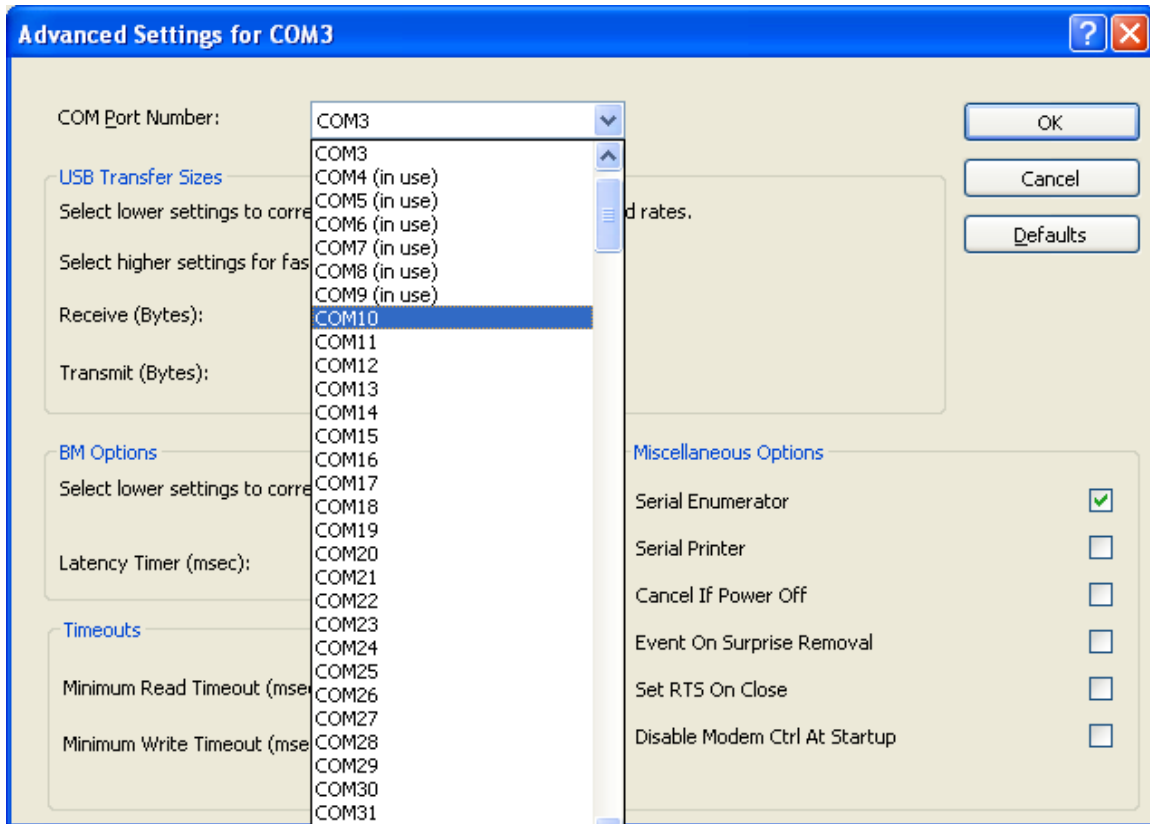
If you click on the Driver tab, you will see more detail about this port.



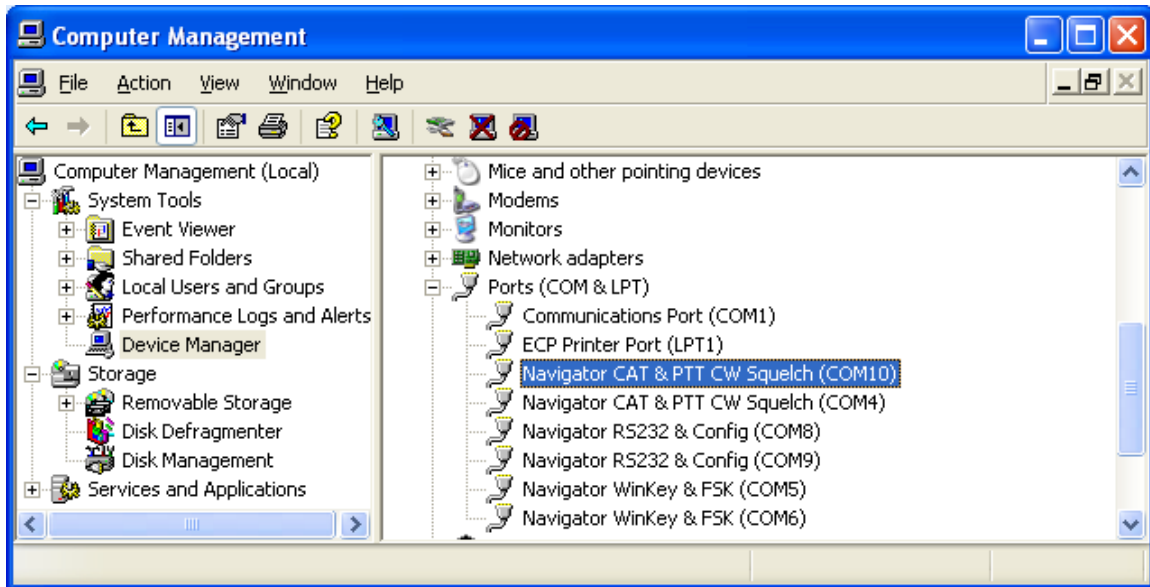
If you need to change the port number from COM4 to another, unused port number, click on the Port Settings TAB and then click on “**Advanced**”



You will now see the detail for this port, and if you click on COM Port Number, you will see a drop down list of ports available, and which ones are in use. (COM4 does not show in use because it is the one you are changing). In this example COM10 is selected, and then OK is clicked and the port has been changed to COM10



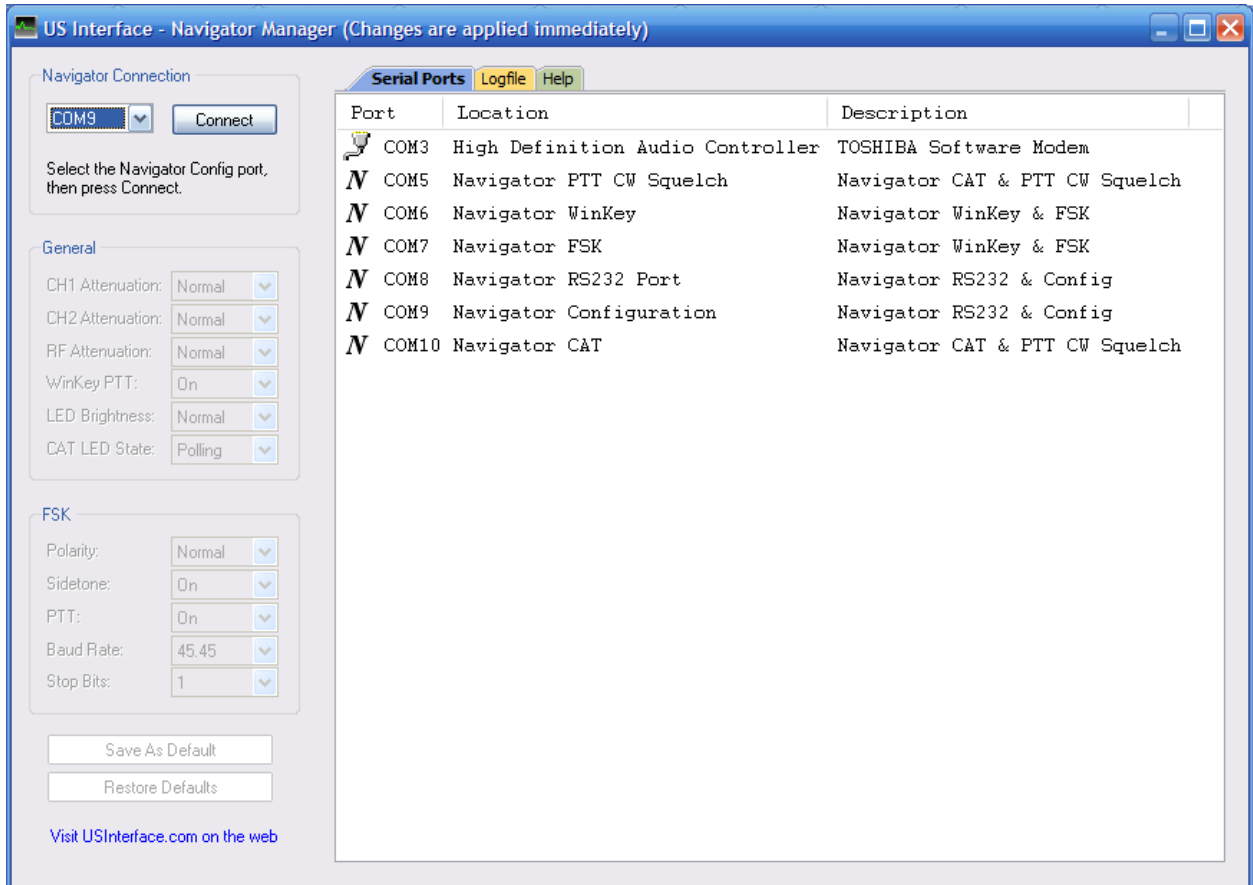
If you check Device manager again, you will see that COM3 still shows for this port. Click “Action / Scan for hardware changes” You will now see that COM10 is assigned to this port.



Make any other reassignments that you wish and when you are through, you **must** reboot your computer to be sure that all of the changes are properly registered. These new assignments will be used every time you plug in your Navigator.

## DM780 / NAVIGATOR MANAGER

If you are using HRD / DM780 software, you will find a very useful tool that does the job of Device Manager and the NavOptions options selector combined in one screen. Select Tools/Navigator Manager from the DM780 main screen. The individual port assignments are shown in the Location column.



**NOTE:** There is a stand alone version of this program available if you are not using HRD/DM780. It is called Navigator Options and is available in the Driver2418 folder supplied with this procedure:

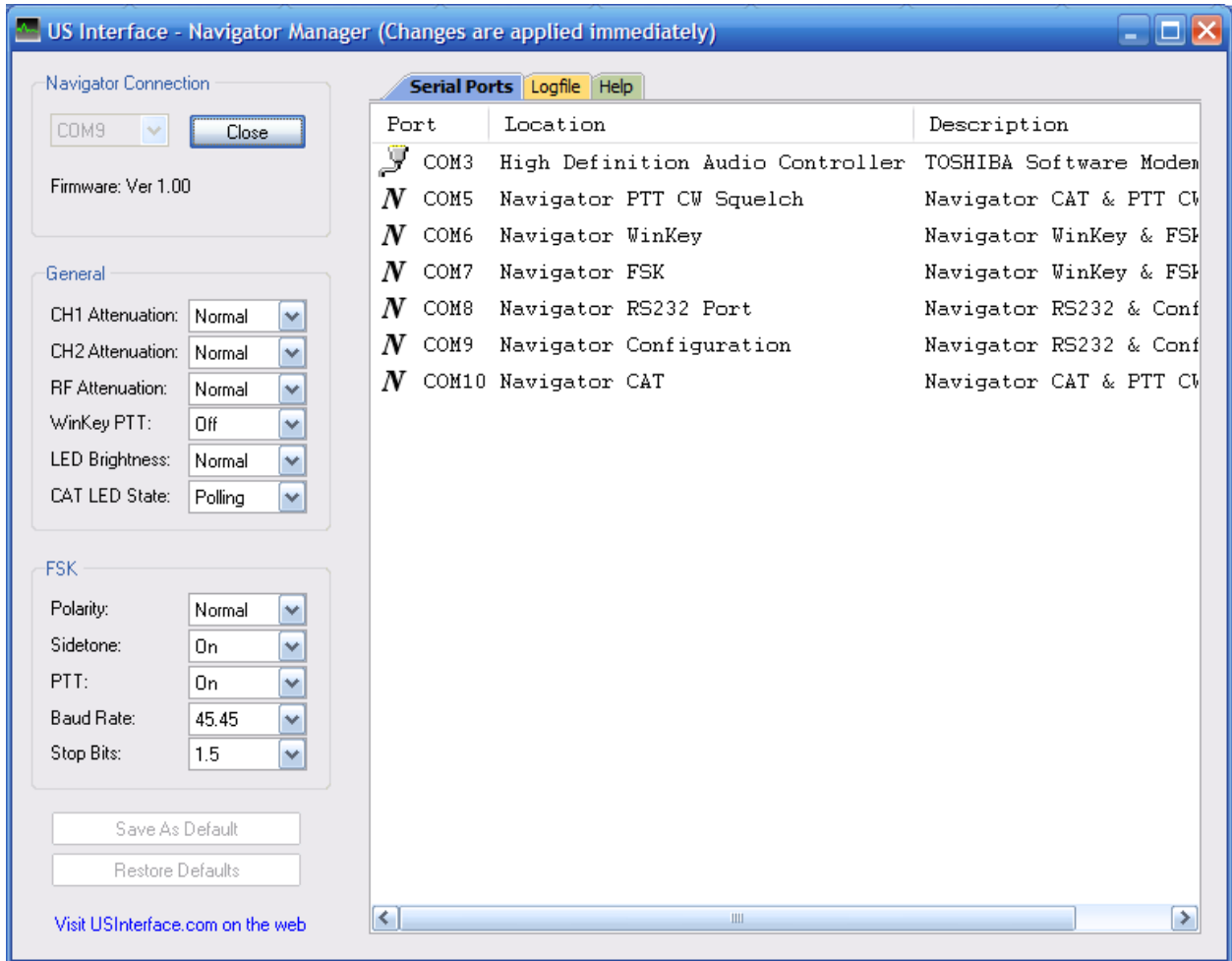
NavOptions2.exe

It is also available on the web at Navigator-Interface yahoo groups forum in the FILES section:

<http://groups.yahoo.com/group/NAVIGATOR-Interface/files/NavigatorOptions.zip>

This is a standalone .exe file and can be copied to your desktop or any other location that is convenient. Note that you CAN NOT use NavOptions2 and the HRD/DM780 Navigator Manager at the same time, since they would compete for the same data.

If you want to make changes to the Navigator options, click the “Connect” button on the left, and the full options selection screen will appear. If you are making changes to the options and then want to go back to the originals, click the “Restore Defaults” button. Once you are satisfied with the changes, click the “Save as Default” button so that the Navigator comes up with these settings every time it is powered on. You should now click “Close”.



**Installation is now complete.**