



NavOptions23 Update 1/19/2023

Timewave Technology is releasing a support and maintenance update to the Navigator Options Manager program. New release NavOptions23 has several new features to aid in the setup and operation of the Navigator.

The NavOptions23 "About" box enhancements include three reference links and a "Print" button.

The three links provide quick access to the homepage of the Timewave website, the Navigator page on the Timewave website and the homepage of the Navigator Forum. These three sites contain all the documents and software downloads for installation and operation of the Navigator.

To view the "About box", simply left click on the Timewave logo on the bottom right side of the NavOptions23 page or the System Icon for System Menu at top left-hand corner of the NavOptions23 page (Figure 1.) See Figure 2 in this document to preview the About box.

Press the "Print" button in the "About box" to print a single page copy of the current settings and values of the NavOptions23 page on your printer.

The Default buttons have slightly modified names and operation. The General and FSK settings of all Navigators shipped from Timewave after Feb. 1, 2023 have the Default settings shown in Figure 1. The user may modify any of the settings at any time. Pressing "Save New Default" will save all the current settings shown in NavOptions23. These values will be restored whenever you power-on and restart the Navigator or when you press "Restore Saved default."

Note there is not a "restore factory default" function in the Navigator. At any time, you can enter the settings shown in Figure 1 and press "Save New Default" if you wish to have the new-from-factory settings as your default.

NavOptions23 operates with Windows 7 through Windows 11. Use NavOptions2 for older Windows operating systems.

Download NavOptions23.zip from:

<https://groups.io/g/Navigator-Interface> or

<http://timewave.com/support/Navigator/index.html>

Unzip the folder and place it on your Windows desktop. Left click on NavOptions23.exe to open it. You can place a shortcut to NavOptions23.exe on your Windows desktop or taskbar.

Navigator Options Manager 23

Navigator Connection

COM6 Close

Connected
Firmware Ver 1.00

General

CH1 Attenuation Normal

CH2 Attenuation Normal

RF Attenuation Normal

WinKey PTT Off

LED Brightness Normal

CAT LED State Polling

FSK

Polarity Normal

Sidetone On

FSK PTT On

Baud Rate 45.45

Stop Bits 2

Default

Save New Default


Restore Saved Default

Ports

Refresh

Show Ports
☒ Navigator Only
☐ All COM Ports

Port	Navigator Function
COM4	Navigator FSK
COM5	Navigator RS232 Port
COM6	Navigator Configuration
COM7	Navigator CAT
COM8	Navigator PTT CW Squelch
COM11	Navigator WinKey



Copyright © 2023 Timewave Technology Inc.

Figure 1. NavOptions23 page

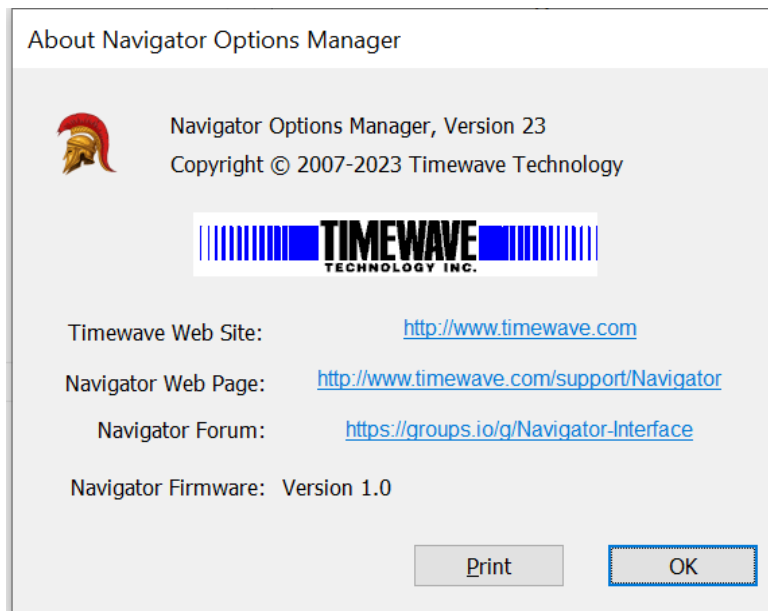


Figure 2. Navigator "About" box